

# 2023 Water Rate Update

## Purpose of Update

1. Water Conservation with a focus on high water users
2. Stay within our available water supply
3. Ensure equity across customer classes



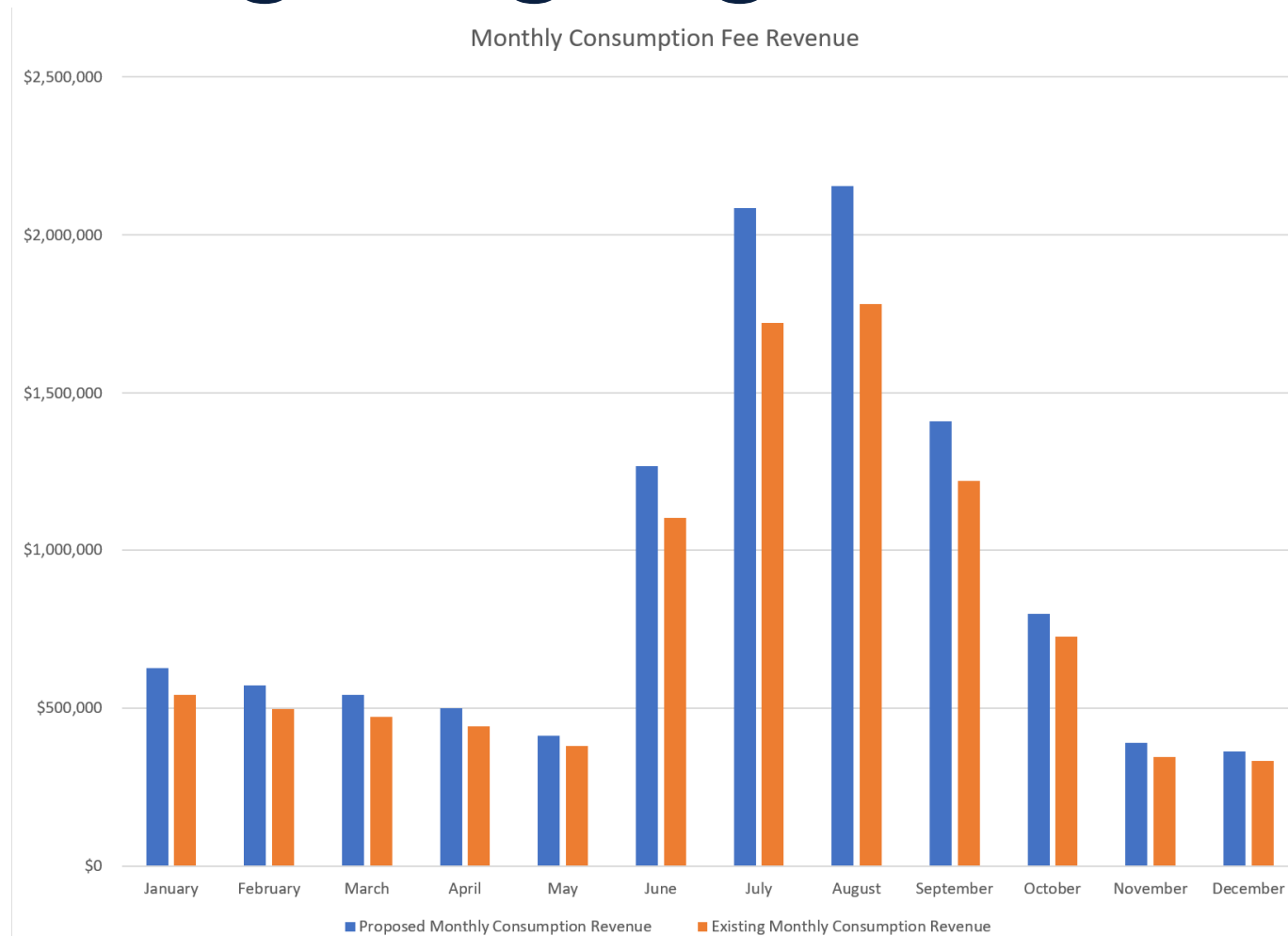
# 2023 Water Rate Update

## Recommended Goals and Parameters

- a. Generate minimum thresholds of required revenue
  - i. 150 days min cash
  - ii. 120% of annual debt service (\$9.4 M annual debt obligation through 2042)
  - iii. Inclusion of an adequate repair and replacement budget for the water system.
- b. 10% revenue increase to offset the impacts of high inflation during 2020, 2021, 2022
  - i. Salt Lake City water and sewer – approx. 15%
  - ii. Mountain Regional – 8%, with 5% to 8% three-year projection
- c. Maintain approximately 50% of total revenue from base fees
- d. Cost based fee structure - Revenue from each customer class to be proportional to their total water consumption
- e. Higher cost burden on high water users

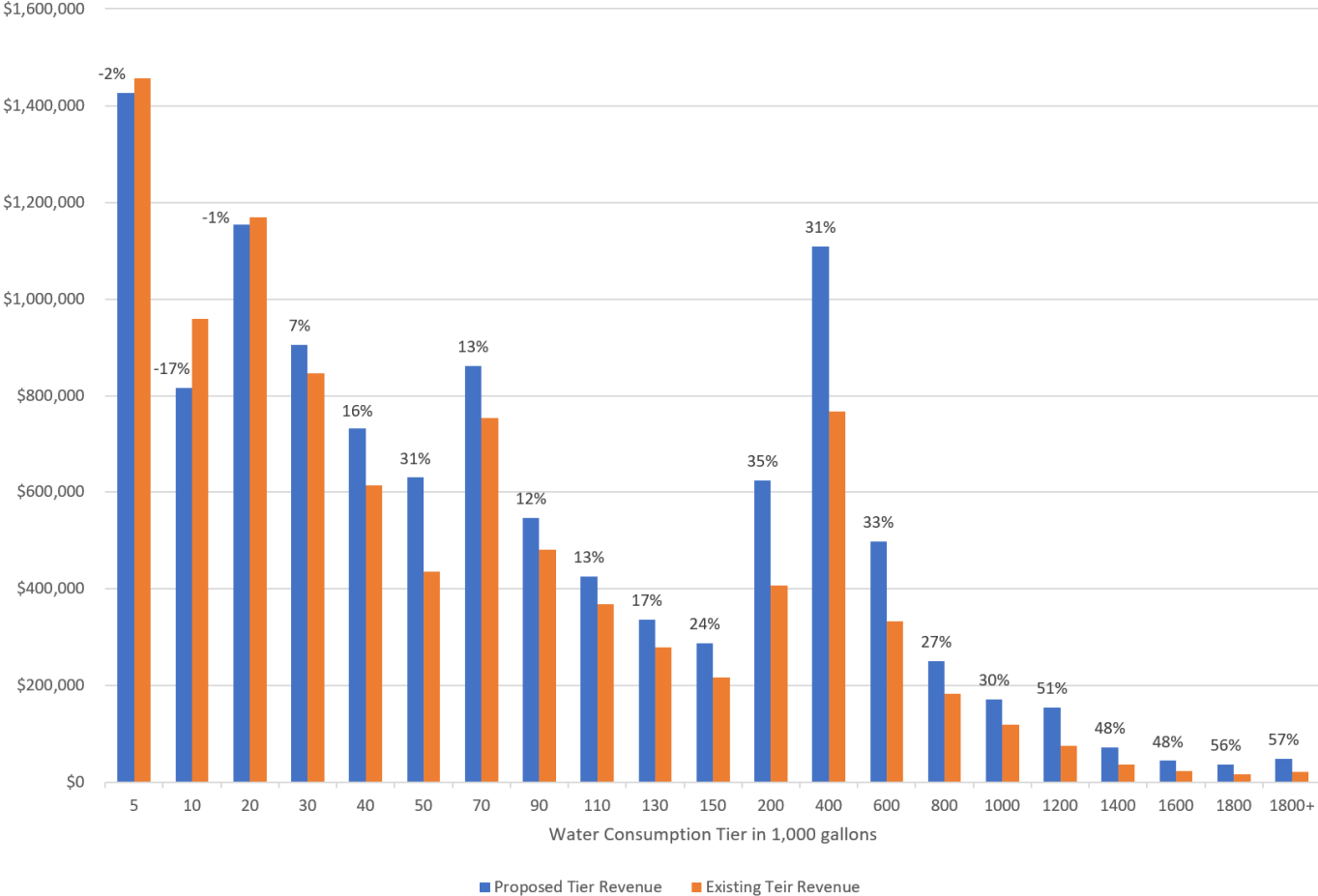


# Targeting High Water Use



# Targeting High Water Use

Consumption Tier Revenue and Percent Change from Existing



# Base Fee Summary

Residential – no change in base rate

Customer Class and Meter Size	Number of Connections	Proposed Base Rate	Percent Revenue Increase	Percent Revenue Existing Rates	Percent Revenue Proposed Rates	Percent Total Water Consumption
<b>Multi-Family</b>	<b>317</b>		<b>0%</b>	<b>19%</b>	<b>18%</b>	<b>18%</b>
0.75 inch	66	\$71.60	0%	1%	1%	1%
1 inch	69	\$121.51	0%	1%	1%	1%
1.5 inch	76	\$259.56	0%	3%	3%	4%
2 inch	75	\$541.29	0%	6%	5%	5%
3 inch	19	\$1,408.58	0%	4%	4%	4%
4 inch	11	\$2,557.37	0%	4%	4%	2%
6 inch	1	\$4,820.72	0%	1%	1%	1%
<b>Residential</b>	<b>4,628</b>		<b>0%</b>	<b>46%</b>	<b>43%</b>	<b>41%</b>
0.75 inch	2,232	\$55.24	0%	18%	16%	16%
1 inch	1,175	\$74.57	0%	13%	12%	12%
1.5 inch	1,199	\$88.44	0%	15%	14%	14%
2 inch	22	\$88.44	0%	0.3%	0.3%	0.4%



# Base Fee Summary

## Irrigation and Commercial

Customer Class and Meter Size	Number of Connections	Proposed Base Rate	Percent Revenue Increase	Percent Revenue Existing Rates	Percent Revenue Proposed Rates	Percent Total Water Consumption
<b>Commercial</b>	<b>374</b>		<b>20%</b>	<b>29%</b>	<b>32%</b>	<b>33%</b>
0.75 inch	87	\$85.92	20%	1%	1%	1%
1 inch	93	\$145.81	20%	2%	2%	1%
1.5 inch	79	\$311.47	20%	3%	3%	4%
2 inch	64	\$649.55	20%	5%	6%	5%
3 inch	13	\$1,690.30	20%	3%	3%	2%
4 inch	33	\$3,068.84	20%	12%	14%	10%
6 inch	5	\$5,784.86	20%	3%	4%	9%
<b>Irrigation</b>	<b>178</b>		<b>39%</b>	<b>6%</b>	<b>8%</b>	<b>8%</b>
0.75 inch	24	\$158.87	30%	0%	0%	0%
1 inch	44	\$351.56	70%	1%	1%	1%
1.5 inch	65	\$883.54	100%	2%	4%	4%
2 inch	44	\$883.54	-4%	3%	3%	3%
3 inch	1	\$883.54	-63%	0%	0%	0%



# Consumption Fee Summary

## Residential

Customer Class and Meter Size	Number of Connections	Percent Revenue Increase	Percent Revenue Existing Rates	Percent Revenue Proposed Rates	Percent Total Water Consumption
<b>Multi-Family</b>	<b>317</b>	<b>18%</b>	<b>16%</b>	<b>17%</b>	<b>18%</b>
0.75 inch	66	-1%	0.5%	0.4%	0.6%
1 inch	69	5%	1%	1%	1%
1.5 inch	76	18%	4%	4%	4%
2 inch	75	20%	5%	5%	5%
3 inch	19	30%	3%	4%	4%
4 inch	11	7%	2%	2%	2%
6 inch	1	12%	1%	1%	1%
<b>Residential</b>	<b>4,628</b>	<b>7%</b>	<b>45%</b>	<b>41%</b>	<b>41%</b>
0.75 inch	2,232	3%	15%	13%	16%
1 inch	1,175	7%	13%	12%	12%
1.5 inch	1,199	9%	17%	16%	14%
2 inch	22	13%	1%	1%	0.4%



# Consumption Fee Summary

## Irrigation and Commercial

Customer Class and Meter Size	Number of Connections	Percent Revenue Increase	Percent Revenue Existing Rates	Percent Revenue Proposed Rates	Percent Total Water Consumption
<b>Commercial</b>	<b>374</b>	<b>28%</b>	<b>29%</b>	<b>32%</b>	<b>33%</b>
0.75 inch	87	30%	1%	1%	1%
1 inch	93	19%	1%	1%	1%
1.5 inch	79	40%	4%	4%	4%
2 inch	64	28%	4%	4%	5%
3 inch	13	24%	3%	3%	2%
4 inch	33	26%	9%	10%	10%
6 inch	5	28%	7%	8%	9%
<b>Irrigation</b>	<b>178</b>	<b>24%</b>	<b>10%</b>	<b>10%</b>	<b>8%</b>
0.75 inch	24	31%	0.2%	0.3%	0.2%
1 inch	44	19%	1%	1%	1%
1.5 inch	65	19%	5%	5%	4%
2 inch	44	32%	4%	4%	3%
3 inch	1	13%	0%	0%	0%





# Total Fee Summary

Customer Class and Meter Size	Number of Connections	Percent Revenue Increase	Percent Revenue Existing Rates	Percent Revenue Proposed Rates	Percent Total Water Consumption
Commercial	374	24%	29%	32%	33%
Irrigation	178	29%	8%	9%	8%
Multi-Family	317	9%	18%	17%	18%
Residential	4,628	3%	45%	42%	41%
Total	5,497	12.5%			



# Proposed Consumption Fee

Number of Accounts	Meter Rate	Base Fee	August 95th percentile user																				
			Bold = annual average consumption																				
			1,000 gallons per Month																				
0 - 5	6 - 10	11 - 20	21 - 30	31 - 40	41 - 50	51 - 70	71 - 90	91 - 110	111 - 130	131 - 150	151 - 200	201 - 400	401 - 600	601 - 800	801 - 1,000	1,001 - 1,200	1,201 - 1,400	1,401 - 1,600	1,601 - 1,800	above 1,801			
2,232	res0.75	\$55	\$6.88	<b>\$9.08</b>	\$11.73	\$16.54	<b>\$23.10</b>	\$34.65	\$34.65	\$34.65	\$34.65	\$34.65	\$34.65	\$34.65	\$34.65	\$34.65	\$34.65	\$34.65	\$34.65	\$34.65	\$34.65	\$34.65	
1,175	res1	\$75	\$6.88	<b>\$9.08</b>	\$11.73	\$16.54	\$23.10	\$34.65	<b>\$34.65</b>	\$34.65	\$34.65	\$34.65	\$34.65	\$34.65	\$34.65	\$34.65	\$34.65	\$34.65	\$34.65	\$34.65	\$34.65	\$34.65	
1,199	res1.5	\$88	\$6.88	\$9.08	<b>\$11.73</b>	\$16.54	\$23.10	\$34.65	\$34.65	<b>\$34.65</b>	\$34.65	\$34.65	\$34.65	\$34.65	\$34.65	\$34.65	\$34.65	\$34.65	\$34.65	\$34.65	\$34.65	\$34.65	
22	res2	\$88	\$6.88	\$9.08	<b>\$11.73</b>	\$16.54	\$23.10	\$34.65	\$34.65	\$34.65	<b>\$34.65</b>	\$34.65	\$34.65	\$34.65	\$34.65	\$34.65	\$34.65	\$34.65	\$34.65	\$34.65	\$34.65	\$34.65	
87	comm0.75	\$86	\$9.08	<b>\$9.08</b>	\$11.73	\$16.54	\$16.54	\$16.54	<b>\$23.10</b>	\$23.10	\$23.10	\$34.65	\$34.65	\$34.65	\$34.65	\$34.65	\$34.65	\$34.65	\$34.65	\$34.65	\$34.65	\$34.65	
93	comm1	\$146	\$9.08	\$9.08	<b>\$9.08</b>	\$11.73	\$16.54	\$16.54	<b>\$16.54</b>	\$16.54	\$23.10	\$23.10	\$23.10	\$34.65	\$34.65	\$34.65	\$34.65	\$34.65	\$34.65	\$34.65	\$34.65	\$34.65	
79	comm1.5	\$311	\$9.08	\$9.08	\$9.08	\$9.08	\$11.73	<b>\$11.73</b>	\$16.54	\$16.54	\$16.54	\$16.54	\$23.10	<b>\$23.10</b>	\$23.10	\$34.65	\$34.65	\$34.65	\$34.65	\$34.65	\$34.65	\$34.65	
64	comm2	\$650	\$9.08	\$9.08	\$9.08	\$9.08	\$9.08	<b>\$9.08</b>	\$11.73	\$11.73	\$16.54	\$16.54	\$16.54	<b>\$23.10</b>	\$23.10	\$23.10	\$34.65	\$34.65	\$34.65	\$34.65	\$34.65	\$34.65	
13	comm3	\$1,690	\$9.08	\$9.08	\$9.08	\$9.08	\$9.08	\$9.08	\$9.08	\$9.08	\$9.08	\$9.08	\$11.73	<b>\$16.54</b>	\$16.54	<b>\$23.10</b>	\$23.10	\$23.10	\$34.65	\$34.65	\$34.65	\$34.65	
33	comm4	\$3,069	\$9.08	\$9.08	\$9.08	\$9.08	\$9.08	\$9.08	\$9.08	\$9.08	\$9.08	\$9.08	\$9.08	\$11.73	<b>\$11.73</b>	\$16.54	\$16.54	<b>\$23.10</b>	\$34.65	\$34.65	\$34.65	\$34.65	
5	comm6	\$5,785	\$9.08	\$9.08	\$9.08	\$9.08	\$9.08	\$9.08	\$9.08	\$9.08	\$9.08	\$9.08	\$9.08	\$11.73	\$11.73	\$11.73	\$11.73	\$11.73	\$16.54	\$16.54	\$16.54	\$23.10	<b>\$34.65</b>
66	multi0.75	\$72	\$6.88	<b>\$9.08</b>	\$11.73	\$16.54	<b>\$23.10</b>	\$34.65	\$34.65	\$34.65	\$34.65	\$34.65	\$34.65	\$34.65	\$34.65	\$34.65	\$34.65	\$34.65	\$34.65	\$34.65	\$34.65	\$34.65	
69	multi1	\$122	\$6.88	\$6.88	<b>\$9.08</b>	\$11.73	\$16.54	<b>\$23.10</b>	\$23.10	\$34.65	\$34.65	\$34.65	\$34.65	\$34.65	\$34.65	\$34.65	\$34.65	\$34.65	\$34.65	\$34.65	\$34.65	\$34.65	
76	multi1.5	\$260	\$6.88	\$6.88	\$6.88	\$9.08	<b>\$11.73</b>	\$11.73	\$16.54	\$16.54	\$23.10	\$23.10	<b>\$34.65</b>	\$34.65	\$34.65	\$34.65	\$34.65	\$34.65	\$34.65	\$34.65	\$34.65	\$34.65	
75	multi2	\$541	\$6.88	\$6.88	\$6.88	\$9.08	\$9.08	\$9.08	<b>\$11.73</b>	\$11.73	\$16.54	\$16.54	\$23.10	\$34.65	<b>\$34.65</b>	\$34.65	\$34.65	\$34.65	\$34.65	\$34.65	\$34.65	\$34.65	
19	multi3	\$1,409	\$6.88	\$6.88	\$6.88	\$6.88	\$6.88	\$9.08	\$9.08	\$9.08	\$9.08	\$11.73	\$11.73	<b>\$16.54</b>	\$23.10	<b>\$34.65</b>	\$34.65	\$34.65	\$34.65	\$34.65	\$34.65	\$34.65	
11	multi4	\$2,557	\$6.88	\$6.88	\$6.88	\$6.88	\$6.88	\$6.88	\$6.88	\$6.88	\$6.88	\$6.88	\$9.08	\$9.08	\$16.54	<b>\$23.10</b>	\$34.65	\$34.65	\$34.65	\$34.65	\$34.65	\$34.65	
1	multi6	\$4,821	\$6.88	\$6.88	\$6.88	\$6.88	\$6.88	\$6.88	\$6.88	\$6.88	\$6.88	\$6.88	\$6.88	\$9.08	\$11.73	\$16.54	<b>\$23.10</b>	\$34.65	\$34.65	\$34.65	\$34.65	\$34.65	
24	irrig0.75	\$159	\$11.73	\$11.73	\$16.54	<b>\$16.54</b>	\$23.10	\$23.10	\$23.10	<b>\$23.10</b>	\$34.65	\$34.65	\$34.65	\$34.65	\$34.65	\$34.65	\$34.65	\$34.65	\$34.65	\$34.65	\$34.65	\$34.65	
44	irrig1	\$352	\$11.73	\$11.73	\$11.73	\$11.73	\$15.93	<b>\$15.93</b>	\$15.93	\$16.54	\$23.10	\$23.10	\$23.10	<b>\$23.10</b>	\$34.65	\$34.65	\$34.65	\$34.65	\$34.65	\$34.65	\$34.65	\$34.65	
65	irrig1.5	\$884	\$11.73	\$11.73	\$11.73	\$11.73	\$11.73	\$11.73	\$11.73	\$11.73	<b>\$11.73</b>	\$16.54	\$16.54	\$23.10	\$23.10	<b>\$23.10</b>	\$34.65	\$34.65	\$34.65	\$34.65	\$34.65	\$34.65	
44	irrig2	\$884	\$11.73	\$11.73	\$11.73	\$11.73	\$11.73	\$11.73	\$11.73	\$11.73	\$11.73	<b>\$16.54</b>	\$16.54	\$23.10	\$23.10	<b>\$23.10</b>	\$34.65	\$34.65	\$34.65	\$34.65	\$34.65	\$34.65	
1	irrig3	\$884	\$11.73	\$11.73	\$11.73	\$11.73	\$11.73	\$11.73	\$11.73	\$11.73	\$11.73	<b>\$16.54</b>	\$16.54	\$23.10	\$23.10	<b>\$23.10</b>	\$34.65	\$34.65	\$34.65	\$34.65	\$34.65	\$34.65	



# Existing Consumption Fee

Number of Accounts	Meter Rate	Base Fee	August 95th percentile user																			
			Bold = annual average consumption																			
			1,000 gallons per Month																			
0 - 5	6 - 10	11 - 20	21 - 30	31 - 40	41 - 50	51 - 70	71 - 90	91 - 110	111 - 130	131' - 150	151 - 200	201 - 400	401 - 600	601 - 800	801 - 1,000	1,001 - 1,200	1,201 - 1,400	1,401 - 1,600	1,601 - 1,800	above 1,801		
2,232	res0.75	\$55	\$6.88	<b>\$11.03</b>	\$11.61	\$15.04	<b>\$17.93</b>	\$17.93	\$31.34	\$31.34	\$31.34	\$31.34	\$31.34	\$31.34	\$31.34	\$31.34	\$31.34	\$31.34	\$31.34	\$31.34	\$31.34	\$31.34
1,175	res1	\$75	\$6.88	<b>\$11.03</b>	\$11.61	\$15.04	\$17.93	\$17.93	<b>\$31.34</b>	\$31.34	\$31.34	\$31.34	\$31.34	\$31.34	\$31.34	\$31.34	\$31.34	\$31.34	\$31.34	\$31.34	\$31.34	\$31.34
1,199	res1.5	\$88	\$6.88	<b>\$11.03</b>	<b>\$11.61</b>	\$15.04	\$17.93	\$17.93	<b>\$31.34</b>	<b>\$31.34</b>	<b>\$31.34</b>	\$31.34	\$31.34	\$31.34	\$31.34	\$31.34	\$31.34	\$31.34	\$31.34	\$31.34	\$31.34	\$31.34
22	res2	\$88	\$6.88	<b>\$11.03</b>	<b>\$11.61</b>	\$15.04	\$17.93	\$17.93	<b>\$31.34</b>	<b>\$31.34</b>	<b>\$31.34</b>	\$31.34	\$31.34	\$31.34	\$31.34	\$31.34	\$31.34	\$31.34	\$31.34	\$31.34	\$31.34	\$31.34
87	comm0.75	\$72	\$9.67	<b>\$9.67</b>	\$9.67	\$9.67	\$9.67	\$9.67	<b>\$9.67</b>	\$9.67	\$9.67	\$9.67	\$9.67	\$14.98	\$14.98	\$14.98	\$14.98	\$14.98	\$14.98	\$14.98	\$14.98	\$14.98
93	comm1	\$122	\$9.67	\$9.67	<b>\$9.67</b>	\$9.67	\$9.67	\$9.67	<b>\$9.67</b>	\$9.67	\$9.67	\$9.67	\$9.67	\$9.67	\$14.98	\$14.98	\$14.98	\$14.98	\$14.98	\$14.98	\$14.98	\$14.98
79	comm1.5	\$260	\$9.67	\$9.67	\$9.67	\$9.67	\$9.67	<b>\$9.67</b>	\$9.67	\$9.67	\$9.67	\$9.67	\$9.67	<b>\$9.67</b>	\$9.67	\$9.67	\$14.98	\$14.98	\$14.98	\$14.98	\$14.98	\$14.98
64	comm2	\$541	\$9.67	\$9.67	\$9.67	\$9.67	\$9.67	<b>\$9.67</b>	\$9.67	\$9.67	\$9.67	\$9.67	\$9.67	<b>\$9.67</b>	\$9.67	\$9.67	\$14.98	\$14.98	\$14.98	\$14.98	\$14.98	\$14.98
13	comm3	\$1,409	\$9.67	\$9.67	\$9.67	\$9.67	\$9.67	\$9.67	\$9.67	\$9.67	\$9.67	\$9.67	\$9.67	<b>\$9.67</b>	\$9.67	<b>\$9.67</b>	\$9.67	\$9.67	\$9.67	\$14.98	\$14.98	\$14.98
33	comm4	\$2,557	\$9.67	\$9.67	\$9.67	\$9.67	\$9.67	\$9.67	\$9.67	\$9.67	\$9.67	\$9.67	\$9.67	<b>\$9.67</b>	\$9.67	\$9.67	<b>\$9.67</b>	\$9.67	\$9.67	\$9.67	\$9.67	\$9.67
5	comm6	\$4,821	\$9.67	\$9.67	\$9.67	\$9.67	\$9.67	\$9.67	\$9.67	\$9.67	\$9.67	\$9.67	\$9.67	\$9.67	\$9.67	\$9.67	\$9.67	\$9.67	\$9.67	\$9.67	\$9.67	<b>\$14.98</b>
66	multi0.75	\$72	\$8.15	<b>\$8.15</b>	\$11.03	\$11.03	<b>\$11.03</b>	\$17.93	\$17.93	\$17.93	\$27.61	\$27.61	\$27.61	\$27.61	\$27.61	\$27.61	\$27.61	\$27.61	\$27.61	\$27.61	\$27.61	\$27.61
69	multi1	\$122	\$8.15	\$8.15	<b>\$8.15</b>	\$11.03	<b>\$11.03</b>	<b>\$11.03</b>	\$17.93	\$17.93	\$17.93	\$27.61	\$27.61	\$27.61	\$27.61	\$27.61	\$27.61	\$27.61	\$27.61	\$27.61	\$27.61	\$27.61
76	multi1.5	\$260	\$8.15	\$8.15	\$8.15	\$8.15	<b>\$11.03</b>	\$11.03	\$11.03	\$11.03	\$17.93	\$17.93	<b>\$17.93</b>	\$17.93	\$27.61	\$27.61	\$27.61	\$27.61	\$27.61	\$27.61	\$27.61	\$27.61
75	multi2	\$541	\$8.15	\$8.15	\$8.15	\$8.15	\$8.15	\$8.15	<b>\$11.03</b>	\$11.03	\$11.03	\$11.03	\$11.03	\$17.93	<b>\$17.93</b>	\$27.61	\$27.61	\$27.61	\$27.61	\$27.61	\$27.61	\$27.61
19	multi3	\$1,409	\$8.15	\$8.15	\$8.15	\$8.15	\$8.15	\$8.15	\$8.15	\$8.15	\$11.03	\$11.03	\$11.03	\$11.03	<b>\$17.93</b>	\$27.61	\$27.61	\$27.61	\$27.61	\$27.61	\$27.61	\$27.61
11	multi4	\$2,557	\$8.15	\$8.15	\$8.15	\$8.15	\$8.15	\$8.15	\$8.15	\$8.15	\$8.15	\$8.15	\$8.15	<b>\$8.15</b>	\$11.03	<b>\$11.03</b>	\$17.93	\$17.93	\$27.61	\$27.61	\$27.61	\$27.61
1	multi6	\$4,821	\$8.15	\$8.15	\$8.15	\$8.15	\$8.15	\$8.15	\$8.15	\$8.15	\$8.15	\$8.15	\$8.15	<b>\$8.15</b>	\$11.03	<b>\$11.03</b>	\$17.93	<b>\$17.93</b>	\$17.93	\$27.61	\$27.61	\$27.61
24	irrig0.75	\$122	\$11.78	\$11.78	\$11.78	<b>\$11.78</b>	\$11.78	\$11.78	\$19.15	<b>\$19.15</b>	\$19.15	\$19.15	\$19.15	\$19.15	\$19.15	\$19.15	\$19.15	\$19.15	\$19.15	\$19.15	\$19.15	\$19.15
44	irrig1	\$207	\$11.78	\$11.78	\$11.78	\$11.78	\$11.78	<b>\$11.78</b>	\$11.78	\$11.78	\$19.15	\$19.15	\$19.15	<b>\$19.15</b>	\$19.15	\$19.15	\$19.15	\$19.15	\$19.15	\$19.15	\$19.15	\$19.15
65	irrig1.5	\$442	\$11.78	\$11.78	\$11.78	\$11.78	\$11.78	\$11.78	\$11.78	\$11.78	<b>\$11.78</b>	\$11.78	\$11.78	\$19.15	<b>\$19.15</b>	\$19.15	\$19.15	\$19.15	\$19.15	\$19.15	\$19.15	\$19.15
44	irrig2	\$921	\$11.78	\$11.78	\$11.78	\$11.78	\$11.78	\$11.78	\$11.78	\$11.78	\$11.78	\$11.78	\$11.78	<b>\$11.78</b>	\$19.15	\$19.15	\$19.15	\$19.15	\$19.15	\$19.15	\$19.15	\$19.15
1	irrig3	\$2,397	\$11.78	\$11.78	\$11.78	\$11.78	\$11.78	\$11.78	\$11.78	\$11.78	\$11.78	\$11.78	\$11.78	<b>\$11.78</b>	\$19.15	\$19.15	\$19.15	\$19.15	\$19.15	\$19.15	\$19.15	\$19.15



# Change in Consumption Fee

Number of Accounts	Meter Rate	Base Fee	1,000 gallons per Month																				
			0 - 5	6 - 10	11 - 20	21 - 30	31 - 40	41 - 50	51 - 70	71 - 90	91 - 110	111 - 130	131' -150	151 - 200	201 - 400	401 - 600	601 - 800	801 - 1,000	1,001 - 1,200	1,201 - 1,400	1,401 - 1,600	1,601 - 1,800	above 1,801
			<b>Bold = annual average consumption</b>																				
2,232	res0.75	0%	0%	<b>-18%</b>	1%	10%	29%	93%	11%	11%	11%	11%	11%	11%	11%	11%	11%	11%	11%	11%	11%	11%	11%
1,175	res1	0%	0%	<b>-18%</b>	1%	10%	29%	93%	11%	11%	11%	11%	11%	11%	11%	11%	11%	11%	11%	11%	11%	11%	11%
1,199	res1.5	0%	0%	<b>-18%</b>	<b>1%</b>	10%	29%	93%	11%	11%	11%	11%	11%	11%	11%	11%	11%	11%	11%	11%	11%	11%	11%
22	res2	0%	0%	<b>-18%</b>	<b>1%</b>	10%	29%	93%	11%	11%	11%	11%	11%	11%	11%	11%	11%	11%	11%	11%	11%	11%	11%
87	comm0.75	20%	-6%	<b>-6%</b>	21%	71%	71%	71%	139%	139%	139%	258%	258%	131%	131%	131%	131%	131%	131%	131%	131%	131%	131%
93	comm1	20%	-6%	-6%	<b>-6%</b>	21%	71%	71%	71%	71%	139%	139%	139%	258%	258%	131%	131%	131%	131%	131%	131%	131%	131%
79	comm1.5	20%	-6%	-6%	-6%	-6%	21%	<b>21%</b>	71%	71%	71%	139%	139%	139%	258%	131%	131%	131%	131%	131%	131%	131%	131%
64	comm2	20%	-6%	-6%	-6%	-6%	-6%	<b>-6%</b>	21%	21%	71%	71%	139%	139%	139%	258%	131%	131%	131%	131%	131%	131%	131%
13	comm3	20%	-6%	-6%	-6%	-6%	-6%	-6%	-6%	-6%	-6%	-6%	21%	<b>71%</b>	71%	139%	139%	139%	258%	131%	131%	131%	131%
33	comm4	20%	-6%	-6%	-6%	-6%	-6%	-6%	-6%	-6%	-6%	-6%	-6%	21%	<b>21%</b>	71%	71%	139%	258%	258%	258%	258%	131%
5	comm6	20%	-6%	-6%	-6%	-6%	-6%	-6%	-6%	-6%	-6%	-6%	-6%	21%	21%	21%	21%	71%	71%	71%	139%	131%	
66	multi0.75	0%	-16%	<b>11%</b>	6%	50%	109%	93%	93%	93%	25%	25%	25%	25%	25%	25%	25%	25%	25%	25%	25%	25%	25%
69	multi1	0%	-16%	-16%	<b>11%</b>	6%	50%	109%	29%	93%	93%	25%	25%	25%	25%	25%	25%	25%	25%	25%	25%	25%	25%
76	multi1.5	0%	-16%	-16%	-16%	11%	<b>6%</b>	6%	50%	50%	29%	29%	93%	93%	25%	25%	25%	25%	25%	25%	25%	25%	25%
75	multi2	0%	-16%	-16%	-16%	11%	11%	11%	<b>6%</b>	6%	50%	50%	109%	93%	93%	25%	25%	25%	25%	25%	25%	25%	25%
19	multi3	0%	-16%	-16%	-16%	-16%	-16%	11%	11%	11%	-18%	6%	6%	<b>50%</b>	109%	93%	25%	25%	25%	25%	25%	25%	25%
11	multi4	0%	-16%	-16%	-16%	-16%	-16%	-16%	-16%	-16%	-16%	-16%	11%	-18%	50%	109%	93%	93%	25%	25%	25%	25%	25%
1	multi6	0%	-16%	-16%	-16%	-16%	-16%	-16%	-16%	-16%	-16%	-16%	-16%	11%	<b>6%</b>	50%	-8%	29%	93%	25%	25%	25%	25%
24	irrig0.75	30%	0%	0%	<b>40%</b>	96%	96%	21%	21%	81%	81%	81%	81%	81%	81%	81%	81%	81%	81%	81%	81%	81%	81%
44	irrig1	70%	0%	0%	0%	35%	<b>35%</b>	35%	40%	21%	21%	21%	21%	21%	81%	81%	81%	81%	81%	81%	81%	81%	81%
65	irrig1.5	100%	0%	0%	0%	0%	0%	0%	0%	<b>0%</b>	40%	40%	96%	21%	21%	81%	81%	81%	81%	81%	81%	81%	81%
44	irrig2	-4%	0%	0%	0%	0%	0%	0%	0%	0%	<b>40%</b>	40%	96%	96%	21%	81%	81%	81%	81%	81%	81%	81%	81%
1	irrig3	-63%	0%	0%	0%	0%	0%	0%	0%	0%	<b>40%</b>	40%	96%	96%	96%	81%	81%	81%	81%	81%	81%	81%	81%



# Change in Monthly Consumption Fee

		August 95th percentile user			Bold = annual average consumption																		
		1,000 gallons per Month																					
Number of Accounts	Meter Rate	0 - 5	6 - 10	11 - 20	21 - 30	31 - 40	41 - 50	51 - 70	71 - 90	91 - 110	111- 130	131' -150	151 - 200	201 - 400	401 - 600	601 - 800	801 - 1,000	1,001 - 1,200	1,201 - 1,400	1,401 - 1,600	1,601 - 1,800	above 1,801	
2,232	res0.75	\$0	(\$10)	(\$9)	\$6	\$58	\$225	\$292	\$358	\$424	\$490	\$556	\$722	\$1,384	\$2,046	\$2,708	\$3,370	\$4,032	\$4,694	\$5,356	\$6,018		
1,175	res1	\$0	(\$10)	(\$9)	\$6	\$58	\$225	\$292	\$358	\$424	\$490	\$556	\$722	\$1,384	\$2,046	\$2,708	\$3,370	\$4,032	\$4,694	\$5,356	\$6,018		
1,199	res1.5	\$0	(\$10)	(\$9)	\$6	\$58	\$225	\$292	\$358	\$424	\$490	\$556	\$722	\$1,384	\$2,046	\$2,708	\$3,370	\$4,032	\$4,694	\$5,356	\$6,018		
22	res2	\$0	(\$10)	(\$9)	\$6	\$58	\$225	\$292	\$358	\$424	\$490	\$556	\$722	\$1,384	\$2,046	\$2,708	\$3,370	\$4,032	\$4,694	\$5,356	\$6,018		
87	comm0.75	(\$3)	(\$6)	\$15	\$83	\$152	\$221	\$489	\$758	\$1,027	\$1,526	\$2,026	\$3,009	\$6,943	\$10,877	\$14,811	\$18,745	\$22,679	\$26,613	\$30,547	\$34,481		
93	comm1	(\$3)	(\$6)	(\$12)	\$9	\$78	\$146	\$284	\$421	\$689	\$958	\$1,227	\$2,476	\$7,472	\$11,406	\$15,340	\$19,274	\$23,208	\$27,142	\$31,076	\$35,010		
79	comm1.5	(\$3)	(\$6)	(\$12)	(\$18)	\$3	\$24	\$161	\$298	\$436	\$573	\$842	\$1,513	\$4,199	\$9,195	\$13,129	\$17,063	\$20,997	\$24,931	\$28,865	\$32,799		
64	comm2	(\$3)	(\$6)	(\$12)	(\$18)	(\$23)	(\$29)	\$12	\$53	\$190	\$328	\$465	\$1,137	\$3,823	\$6,509	\$11,505	\$15,439	\$19,373	\$23,307	\$27,241	\$31,175		
13	comm3	(\$3)	(\$6)	(\$12)	(\$18)	(\$23)	(\$29)	(\$41)	(\$53)	(\$65)	(\$76)	(\$35)	\$308	\$1,682	\$4,368	\$7,054	\$9,740	\$14,736	\$18,670	\$22,604	\$26,538		
33	comm4	(\$3)	(\$6)	(\$12)	(\$18)	(\$23)	(\$29)	(\$41)	(\$53)	(\$65)	(\$76)	(\$88)	\$15	\$427	\$1,800	\$3,174	\$5,860	\$10,856	\$15,852	\$20,848	\$25,844		
5	comm6	(\$3)	(\$6)	(\$12)	(\$18)	(\$23)	(\$29)	(\$41)	(\$53)	(\$65)	(\$76)	(\$88)	(\$118)	\$294	\$706	\$1,118	\$1,529	\$2,903	\$4,276	\$5,650	\$8,336		
66	multi0.75	(\$6)	(\$2)	\$5	\$60	\$181	\$348	\$683	\$1,017	\$1,158	\$1,299	\$1,439	\$1,791	\$3,199	\$4,607	\$6,015	\$7,423	\$8,831	\$10,239	\$11,647	\$13,055		
69	multi1	(\$6)	(\$13)	(\$3)	\$4	\$59	\$179	\$283	\$617	\$952	\$1,092	\$1,233	\$1,585	\$2,993	\$4,401	\$5,809	\$7,217	\$8,625	\$10,033	\$11,441	\$12,849		
76	multi1.5	(\$6)	(\$13)	(\$25)	(\$16)	(\$9)	(\$2)	\$108	\$218	\$322	\$425	\$759	\$1,595	\$3,003	\$4,411	\$5,819	\$7,227	\$8,635	\$10,043	\$11,451	\$12,859		
75	multi2	(\$6)	(\$13)	(\$25)	(\$16)	(\$7)	\$3	\$17	\$31	\$141	\$251	\$492	\$1,328	\$4,672	\$6,080	\$7,488	\$8,896	\$10,304	\$11,712	\$13,120	\$14,528		
19	multi3	(\$6)	(\$13)	(\$25)	(\$38)	(\$51)	(\$41)	(\$23)	(\$4)	(\$43)	(\$29)	(\$15)	\$260	\$2,674	\$6,018	\$7,426	\$8,834	\$10,242	\$11,650	\$13,058	\$14,466		
11	multi4	(\$6)	(\$13)	(\$25)	(\$38)	(\$51)	(\$64)	(\$89)	(\$114)	(\$140)	(\$165)	(\$146)	(\$244)	\$858	\$3,272	\$6,616	\$9,960	\$11,368	\$12,776	\$14,184	\$15,592		
1	multi6	(\$6)	(\$13)	(\$25)	(\$38)	(\$51)	(\$64)	(\$89)	(\$114)	(\$140)	(\$165)	(\$191)	(\$144)	(\$4)	\$1,098	\$820	\$1,854	\$5,198	\$6,606	\$8,014	\$9,422		
24	irrig0.75	(\$0)	(\$1)	\$47	\$95	\$208	\$321	\$400	\$479	\$789	\$1,099	\$1,409	\$2,184	\$5,284	\$8,384	\$11,484	\$14,584	\$17,684	\$20,784	\$23,884	\$26,984		
44	irrig1	(\$0)	(\$1)	(\$1)	(\$2)	\$40	\$81	\$164	\$260	\$339	\$418	\$497	\$694	\$3,794	\$6,894	\$9,994	\$13,094	\$16,194	\$19,294	\$22,394	\$25,494		
65	irrig1.5	(\$0)	(\$1)	(\$1)	(\$2)	(\$2)	(\$3)	(\$4)	(\$5)	(\$6)	\$89	\$185	\$751	\$1,541	\$2,331	\$5,431	\$8,531	\$11,631	\$14,731	\$17,831	\$20,931		
44	irrig2	(\$0)	(\$1)	(\$1)	(\$2)	(\$2)	(\$3)	(\$4)	(\$5)	(\$6)	\$89	\$185	\$751	\$3,015	\$3,805	\$6,905	\$10,005	\$13,105	\$16,205	\$19,305	\$22,405		
1	irrig3	(\$0)	(\$1)	(\$1)	(\$2)	(\$2)	(\$3)	(\$4)	(\$5)	(\$6)	\$89	\$185	\$751	\$3,015	\$5,279	\$8,379	\$11,479	\$14,579	\$17,679	\$20,779	\$23,879		



# Change in Monthly Water Bill

Number of Accounts	Meter Rate	Base Fee Change	August 95th percentile user																				
			Bold = annual average consumption																				
			1,000 gallons per Month																				
			0 - 5	6 - 10	11 - 20	21 - 30	31 - 40	41 - 50	51 - 70	71 - 90	91 - 110	111 - 130	131' -150	151 - 200	201 - 400	401 - 600	601 - 800	801 - 1,000	1,001 - 1,200	1,201 - 1,400	1,401 - 1,600	1,601 - 1,800	above 1,801
2,232	res0.75	\$0	\$0	(\$10)	(\$9)	\$6	\$58	\$225	\$292	\$358	\$424	\$490	\$556	\$722	\$1,384	\$2,046	\$2,708	\$3,370	\$4,032	\$4,694	\$5,356	\$6,018	
1,175	res1	\$0	\$0	(\$10)	(\$9)	\$6	\$58	\$225	\$292	\$358	\$424	\$490	\$556	\$722	\$1,384	\$2,046	\$2,708	\$3,370	\$4,032	\$4,694	\$5,356	\$6,018	
1,199	res1.5	\$0	\$0	(\$10)	(\$9)	\$6	\$58	\$225	\$292	\$358	\$424	\$490	\$556	\$722	\$1,384	\$2,046	\$2,708	\$3,370	\$4,032	\$4,694	\$5,356	\$6,018	
22	res2	\$0	\$0	(\$10)	(\$9)	\$6	\$58	\$225	\$292	\$358	\$424	\$490	\$556	\$722	\$1,384	\$2,046	\$2,708	\$3,370	\$4,032	\$4,694	\$5,356	\$6,018	
87	comm0.75	\$14	\$11	\$8	\$29	\$98	\$166	\$235	\$504	\$772	\$1,041	\$1,540	\$2,040	\$3,024	\$6,958	\$10,892	\$14,826	\$18,760	\$22,694	\$26,628	\$30,562	\$34,496	
93	comm1	\$24	\$21	\$18	\$13	\$33	\$102	\$170	\$308	\$445	\$714	\$982	\$1,251	\$2,500	\$7,496	\$11,430	\$15,364	\$19,298	\$23,232	\$27,166	\$31,100	\$35,034	
79	comm1.5	\$52	\$49	\$46	\$40	\$34	\$55	\$75	\$213	\$350	\$488	\$625	\$893	\$1,565	\$4,251	\$9,247	\$13,181	\$17,115	\$21,049	\$24,983	\$28,917	\$32,851	
64	comm2	\$108	\$105	\$102	\$97	\$91	\$85	\$79	\$120	\$161	\$299	\$436	\$573	\$1,245	\$3,931	\$6,617	\$11,613	\$15,547	\$19,481	\$23,415	\$27,349	\$31,283	
13	comm3	\$282	\$279	\$276	\$270	\$264	\$258	\$252	\$241	\$229	\$217	\$205	\$247	\$590	\$1,963	\$4,649	\$7,335	\$10,021	\$15,017	\$18,951	\$22,885	\$26,819	
33	comm4	\$511	\$509	\$506	\$500	\$494	\$488	\$482	\$470	\$459	\$447	\$435	\$423	\$526	\$938	\$2,311	\$3,685	\$6,371	\$11,367	\$16,363	\$21,359	\$26,355	
5	comm6	\$964	\$961	\$958	\$952	\$947	\$941	\$935	\$923	\$911	\$900	\$888	\$876	\$847	\$1,258	\$1,670	\$2,082	\$2,493	\$3,867	\$5,240	\$6,614	\$9,300	
66	multi0.75	\$0	(\$6)	(\$2)	\$5	\$60	\$181	\$348	\$683	\$1,017	\$1,158	\$1,299	\$1,439	\$1,791	\$3,199	\$4,607	\$6,015	\$7,423	\$8,831	\$10,239	\$11,647	\$13,055	
69	multi1	\$0	(\$6)	(\$13)	(\$3)	\$4	\$59	\$179	\$283	\$617	\$952	\$1,092	\$1,233	\$1,585	\$2,993	\$4,401	\$5,809	\$7,217	\$8,625	\$10,033	\$11,441	\$12,849	
76	multi1.5	\$0	(\$6)	(\$13)	(\$25)	(\$16)	(\$9)	(\$2)	\$108	\$218	\$322	\$425	\$759	\$1,595	\$3,003	\$4,411	\$5,819	\$7,227	\$8,635	\$10,043	\$11,451	\$12,859	
75	multi2	\$0	(\$6)	(\$13)	(\$25)	(\$38)	(\$29)	(\$19)	(\$5)	\$8	\$119	\$229	\$470	\$1,306	\$4,650	\$6,058	\$7,466	\$8,874	\$10,282	\$11,690	\$13,098	\$14,506	
19	multi3	\$0	(\$6)	(\$13)	(\$25)	(\$38)	(\$51)	(\$41)	(\$23)	(\$4)	(\$43)	(\$29)	(\$15)	\$260	\$2,674	\$6,018	\$7,426	\$8,834	\$10,242	\$11,650	\$13,058	\$14,466	
11	multi4	\$0	(\$6)	(\$13)	(\$25)	(\$38)	(\$51)	(\$64)	(\$89)	(\$114)	(\$140)	(\$165)	(\$146)	(\$244)	\$858	\$3,272	\$6,616	\$9,960	\$11,368	\$12,776	\$14,184	\$15,592	
1	multi6	\$0	(\$6)	(\$13)	(\$25)	(\$38)	(\$51)	(\$64)	(\$89)	(\$114)	(\$140)	(\$165)	(\$191)	(\$144)	(\$4)	\$1,098	\$820	\$1,854	\$5,198	\$6,606	\$8,014	\$9,422	
24	irrig0.75	\$37	\$36	\$36	\$84	\$131	\$244	\$358	\$437	\$516	\$826	\$1,136	\$1,446	\$2,221	\$5,321	\$8,421	\$11,521	\$14,621	\$17,721	\$20,821	\$23,921	\$27,021	
44	irrig1	\$145	\$145	\$144	\$144	\$143	\$185	\$226	\$309	\$404	\$483	\$562	\$641	\$839	\$3,939	\$7,039	\$10,139	\$13,239	\$16,339	\$19,439	\$22,539	\$25,639	
65	irrig1.5	\$442	\$442	\$441	\$441	\$440	\$440	\$439	\$438	\$437	\$436	\$531	\$626	\$1,192	\$1,982	\$2,772	\$5,872	\$8,972	\$12,072	\$15,172	\$18,272	\$21,372	
44	irrig2	(\$38)	(\$38)	(\$38)	(\$39)	(\$39)	(\$40)	(\$40)	(\$41)	(\$42)	(\$43)	\$52	\$147	\$713	\$2,977	\$3,767	\$6,867	\$9,967	\$13,067	\$16,167	\$19,267	\$22,367	
1	irrig3	(\$1,514)	(\$1,514)	(\$1,514)	(\$1,515)	(\$1,515)	(\$1,516)	(\$1,516)	(\$1,517)	(\$1,518)	(\$1,520)	(\$1,424)	(\$1,329)	(\$763)	\$1,501	\$3,765	\$6,865	\$9,965	\$13,065	\$16,165	\$19,265	\$22,365	



# Proposed Monthly Water Bill



Number of Accounts	Meter Rate	August 95th percentile user																				
		Bold = annual average consumption																				
		1,000 gallons per Month																				
		0 - 5	6 - 10	11 - 20	21 - 30	31 - 40	41 - 50	51 - 70	71 - 90	91 - 110	111- 130	131' -150	151 - 200	201 - 400	401 - 600	601 - 800	801 - 1,000	1,001 - 1,200	1,201 - 1,400	1,401 - 1,600	1,601 - 1,800	above 1,801
2,232	res0.75	\$90	<b>\$135</b>	\$252	\$418	<b>\$649</b>	\$995	\$1,688	\$2,381	\$3,074	\$3,767	\$4,460	\$6,193	\$13,123	\$20,053	\$26,983	\$33,913	\$40,843	\$47,773	\$54,703	\$61,633	
1,175	res1	\$109	<b>\$154</b>	\$272	\$437	\$668	\$1,015	<b>\$1,708</b>	\$2,401	\$3,094	\$3,787	\$4,480	\$6,212	\$13,142	\$20,072	\$27,002	\$33,932	\$40,862	\$47,792	\$54,722	\$61,652	
1,199	res1.5	\$123	\$168	<b>\$286</b>	\$451	\$682	\$1,028	\$1,721	<b>\$2,414</b>	\$3,107	\$3,800	\$4,493	\$6,226	\$13,156	\$20,086	\$27,016	\$33,946	\$40,876	\$47,806	\$54,736	\$61,666	
22	res2	\$123	\$168	<b>\$286</b>	\$451	\$682	\$1,028	\$1,721	<b>\$2,414</b>	<b>\$3,107</b>	\$3,800	\$4,493	\$6,226	\$13,156	\$20,086	\$27,016	\$33,946	\$40,876	\$47,806	\$54,736	\$61,666	
87	comm0.75	\$131	<b>\$177</b>	\$294	\$459	\$625	\$790	<b>\$1,252</b>	\$1,714	\$2,176	\$2,869	\$3,562	\$5,295	\$12,225	\$19,155	\$26,085	\$33,015	\$39,945	\$46,875	\$53,805	\$60,735	
93	comm1	\$191	\$237	<b>\$327</b>	\$445	\$610	\$775	<b>\$1,106</b>	\$1,437	\$1,899	\$2,361	\$2,823	\$4,555	\$11,485	\$18,415	\$25,345	\$32,275	\$39,205	\$46,135	\$53,065	\$59,995	
79	comm1.5	\$357	\$402	\$493	\$584	\$701	<b>\$819</b>	\$1,149	\$1,480	\$1,811	\$2,142	\$2,604	<b>\$3,759</b>	\$8,379	\$15,309	\$22,239	\$29,169	\$36,099	\$43,029	\$49,959	\$56,889	
64	comm2	\$695	\$740	\$831	\$922	\$1,013	<b>\$1,104</b>	\$1,338	\$1,573	\$1,904	\$2,234	\$2,565	<b>\$3,720</b>	\$8,340	\$12,960	\$19,890	\$26,820	\$33,750	\$40,680	\$47,610	\$54,540	
13	comm3	\$1,736	\$1,781	\$1,872	\$1,963	\$2,054	\$2,144	\$2,326	\$2,508	\$2,689	\$2,871	\$3,106	<b>\$3,932</b>	\$7,240	<b>\$11,860</b>	\$16,480	\$21,100	\$28,030	\$34,960	\$41,890	\$48,820	
33	comm4	\$3,114	\$3,160	\$3,250	\$3,341	\$3,432	\$3,523	\$3,705	\$3,886	\$4,068	\$4,250	\$4,431	\$5,018	<b>\$7,363</b>	\$10,671	\$13,978	<b>\$18,598</b>	\$25,528	\$32,458	\$39,388	\$46,318	
5	comm6	\$5,830	\$5,876	\$5,967	\$6,057	\$6,148	\$6,239	\$6,421	\$6,602	\$6,784	\$6,966	\$7,147	\$7,601	\$9,947	\$12,293	\$14,638	\$16,984	\$20,292	\$23,599	\$26,907	\$31,527	
66	multi0.75	\$106	<b>\$151</b>	\$269	\$434	<b>\$665</b>	\$1,012	\$1,705	\$2,398	\$3,091	\$3,784	\$4,477	\$6,209	\$13,139	\$20,069	\$26,999	\$33,929	\$40,859	\$47,789	\$54,719	\$61,649	
69	multi1	\$156	\$190	<b>\$281</b>	\$398	\$564	<b>\$795</b>	\$1,257	\$1,950	\$2,643	\$3,336	\$4,029	\$5,761	\$12,691	\$19,621	\$26,551	\$33,481	\$40,411	\$47,341	\$54,271	\$61,201	
76	multi1.5	\$294	\$328	\$397	\$488	<b>\$605</b>	\$723	\$1,053	\$1,384	\$1,846	\$2,308	<b>\$3,001</b>	\$4,734	\$11,664	\$18,594	\$25,524	\$32,454	\$39,384	\$46,314	\$53,244	\$60,174	
75	multi2	\$576	\$610	\$679	\$770	\$861	\$951	<b>\$1,186</b>	\$1,421	\$1,751	\$2,082	\$2,544	\$4,277	<b>\$11,207</b>	\$18,137	\$25,067	\$31,997	\$38,927	\$45,857	\$52,787	\$59,717	
19	multi3	\$1,443	\$1,477	\$1,546	\$1,615	\$1,684	\$1,775	\$1,956	\$2,138	\$2,320	\$2,554	\$2,789	<b>\$3,616</b>	\$8,236	<b>\$15,166</b>	\$22,096	\$29,026	\$35,956	\$42,886	\$49,816	\$56,746	
11	multi4	\$2,592	\$2,626	\$2,695	\$2,764	\$2,833	\$2,901	\$3,039	\$3,177	\$3,314	\$3,452	<b>\$3,633</b>	\$4,088	\$7,396	<b>\$12,016</b>	\$18,946	\$25,876	\$32,806	\$39,736	\$46,666	\$53,596	
1	multi6	\$4,855	\$4,890	\$4,958	\$5,027	\$5,096	\$5,165	\$5,302	\$5,440	\$5,578	\$5,715	\$5,853	\$6,307	<b>\$8,653</b>	\$11,961	\$15,269	<b>\$19,889</b>	\$26,819	\$33,749	\$40,679	\$47,609	
24	irrig0.75	\$218	\$276	\$442	<b>\$607</b>	\$838	\$1,069	\$1,531	<b>\$1,993</b>	\$2,686	\$3,379	\$4,072	\$5,804	\$12,734	\$19,664	\$26,594	\$33,524	\$40,454	\$47,384	\$54,314	\$61,244	
44	irrig1	\$410	\$469	\$586	\$703	\$863	<b>\$1,022</b>	\$1,341	\$1,671	\$2,133	\$2,595	\$3,057	<b>\$4,212</b>	\$11,142	\$18,072	\$25,002	\$31,932	\$38,862	\$45,792	\$52,722	\$59,652	
65	irrig1.5	\$942	\$1,001	\$1,118	\$1,235	\$1,353	\$1,470	\$1,705	\$1,939	<b>\$2,174</b>	\$2,504	\$2,835	\$3,990	\$8,610	<b>\$13,230</b>	\$20,160	\$27,090	\$34,020	\$40,950	\$47,880	\$54,810	
44	irrig2	\$942	\$1,001	\$1,118	\$1,235	\$1,353	\$1,470	\$1,705	\$1,939	\$2,174	<b>\$2,504</b>	\$2,835	\$3,990	\$8,610	<b>\$13,230</b>	\$20,160	\$27,090	\$34,020	\$40,950	\$47,880	\$54,810	
1	irrig3	\$942	\$1,001	\$1,118	\$1,235	\$1,353	\$1,470	\$1,705	\$1,939	\$2,174	<b>\$2,504</b>	\$2,835	\$3,990	\$8,610	<b>\$13,230</b>	\$20,160	\$27,090	\$34,020	\$40,950	\$47,880	\$54,810	



# Optimizing Meter Rate Examples

Exhibit F - Total Cost per 1,000 gallons for each tier

Number of Accounts	Meter Rate	Base Fee	1,000 gallons per Month																				
			0 - 5	6 - 10	11 - 20	21 - 30	31 - 40	41 - 50	51 - 70	71 - 90	91 - 110	111 - 130	131 - 150	151 - 200	201 - 400	401 - 600	601 - 800	801 - 1,000	1,001 - 1,200	1,201 - 1,400	1,401 - 1,600	1,601 - 1,800	above 1,801
2,232	res0.75	\$55	\$18	<b>\$14</b>	\$13	\$14	\$16	\$20	\$24	\$26	\$28	\$29	\$30	\$31	\$33	\$33	\$34	\$34	\$34	\$34	\$34	\$34	\$34
1,175	res1	\$75	\$22	<b>\$15</b>	\$14	\$15	\$17	\$20	\$24	\$27	\$28	\$29	\$30	\$31	\$33	\$33	\$34	\$34	\$34	\$34	\$34	\$34	\$34
1,199	res1.5	\$88	\$25	\$17	<b>\$14</b>	\$15	\$17	\$21	\$25	\$27	\$28	\$29	\$30	\$31	\$33	\$33	\$34	\$34	\$34	\$34	\$34	\$34	\$34
22	res2	\$88	\$25	\$17	<b>\$14</b>	\$15	\$17	\$21	\$25	\$27	\$28	\$29	\$30	\$31	\$33	\$33	\$34	\$34	\$34	\$34	\$34	\$34	\$34
87	comm0.75	\$86	<b>\$26</b>	<b>\$18</b>	<b>\$15</b>	\$15	\$16	\$16	\$18	\$19	\$20	\$22	\$24	<b>\$23</b>	\$31	\$32	\$33	\$33	\$33	\$33	\$34	\$34	\$34
93	comm1	\$146	\$38	\$24	<b>\$16</b>	<b>\$15</b>	<b>\$15</b>	<b>\$16</b>	<b>\$16</b>	<b>\$16</b>	<b>\$17</b>	<b>\$18</b>	\$19	<b>\$23</b>	\$29	\$31	\$32	\$32	\$33	\$33	\$33	\$33	\$33
79	comm1.5	\$311	\$71	\$40	\$25	\$19	\$18	<b>\$16</b>	\$16	\$16	<b>\$15</b>	<b>\$16</b>	\$17	<b>\$19</b>	\$21	\$26	\$28	\$29	\$30	\$31	\$31	\$32	\$32
64	comm2	\$650	\$139	\$74	\$42	\$31	\$25	<b>\$22</b>	\$19	\$17	\$17	<b>\$17</b>	<b>\$17</b>	<b>\$19</b>	\$21	\$22	\$25	\$27	\$28	\$29	\$30	\$30	\$30
13	comm3	\$1,690	\$347	\$178	\$94	\$65	\$51	\$43	\$33	\$28	\$24	\$22	\$21	<b>\$20</b>	<b>\$18</b>	\$20	\$21	\$21	\$23	\$25	\$26	\$27	\$27
33	comm4	\$3,069	\$623	\$316	\$163	\$111	\$86	\$70	\$53	\$43	\$37	<b>\$33</b>	\$30	\$25	<b>\$18</b>	<b>\$18</b>	<b>\$17</b>	\$19	\$21	\$23	\$25	\$26	\$26
5	comm6	\$5,785	\$1,166	\$588	\$298	\$202	\$154	\$125	\$92	\$73	\$62	<b>\$54</b>	\$48	\$38	\$25	<b>\$20</b>	<b>\$18</b>	<b>\$17</b>	<b>\$17</b>	<b>\$17</b>	<b>\$17</b>	<b>\$18</b>	<b>\$18</b>
66	multi0.75	\$72	<b>\$21</b>	<b>\$15</b>	<b>\$13</b>	\$14	\$17	\$20	\$24	\$27	\$28	\$29	\$30	\$31	\$33	\$33	\$34	\$34	\$34	\$34	\$34	\$34	\$34
69	multi1	\$122	\$31	\$19	<b>\$14</b>	<b>\$13</b>	<b>\$14</b>	\$16	\$18	\$22	\$24	\$26	\$27	\$29	\$32	\$33	\$33	\$33	\$34	\$34	\$34	\$34	\$34
76	multi1.5	\$260	\$59	\$33	\$20	\$16	<b>\$15</b>	<b>\$14</b>	<b>\$15</b>	<b>\$15</b>	\$17	\$18	\$20	\$24	\$29	\$31	\$32	\$32	\$33	\$33	\$33	\$33	\$33
75	multi2	\$541	\$115	\$61	\$34	\$25	\$21	\$19	<b>\$17</b>	\$16	<b>\$16</b>	<b>\$16</b>	<b>\$17</b>	\$21	\$28	\$30	\$31	\$32	\$32	\$33	\$33	\$33	\$33
19	multi3	\$1,409	\$289	\$148	\$77	\$54	\$42	\$35	\$28	\$24	\$21	\$20	\$19	<b>\$18</b>	\$21	\$25	\$28	\$29	\$30	\$31	\$31	\$31	\$32
11	multi4	\$2,557	\$518	\$263	\$135	\$92	\$71	\$58	\$43	\$35	\$30	\$27	<b>\$24</b>	\$20	<b>\$18</b>	\$20	\$24	\$26	\$27	\$28	\$29	\$30	\$30
1	multi6	\$4,821	\$971	\$489	\$248	\$168	\$127	\$103	\$76	\$60	\$51	\$44	\$39	\$32	<b>\$22</b>	<b>\$20</b>	<b>\$19</b>	<b>\$20</b>	<b>\$22</b>	<b>\$24</b>	<b>\$25</b>	<b>\$26</b>	<b>\$26</b>
24	irrig0.75	\$159	<b>\$44</b>	<b>\$28</b>	<b>\$22</b>	<b>\$20</b>	<b>\$21</b>	\$21	\$22	\$22	\$24	\$26	\$27	\$29	\$32	\$33	\$33	\$34	\$34	\$34	\$34	\$34	\$34
44	irrig1	\$352	\$82	\$47	\$29	\$23	\$22	<b>\$20</b>	<b>\$19</b>	<b>\$19</b>	\$19	\$20	\$20	\$21	\$28	\$30	\$31	\$32	\$32	\$33	\$33	\$33	\$33
65	irrig1.5	\$884	\$188	\$100	\$56	\$41	\$34	\$29	\$24	\$22	\$20	<b>\$20</b>	\$19	\$19	\$20	\$22	\$22	\$25	\$27	\$28	\$29	\$30	\$30
44	irrig2	\$884	\$188	\$100	\$56	\$41	\$34	\$29	\$24	\$22	\$20	<b>\$19</b>	\$19	\$20	\$22	\$22	\$25	\$27	\$28	\$29	\$30	\$30	\$30
1	irrig3	\$884	\$188	\$100	\$56	\$41	\$34	\$29	\$24	\$22	\$20	<b>\$20</b>	\$19	\$19	\$20	\$22	\$22	\$25	\$27	\$28	\$29	\$30	\$30

-  4" meter rate, low water use – customer moves to 1.5" meter rate
-  1" meter rate, high water use – customer moves to 2" meter rate





**Exhibit J**  
**Example Customer Impacts - Annual Water Usage and Bill Amount**

Customer Class	Meter Rate	User Rank	Description	Gallons of Water	Existing Water Bill	Proposed Water Bill	Optimized Bill	Percent Change	Percent Change if Meter Rate Optimized
Highest Water User (customer has 2 meters)	2	1	Hotel	15,524,000	\$ 181,574	\$ 436,153	\$ 263,424	140%	45%
	4	1	Hotel	13,705,000	\$ 165,377	\$ 301,480	\$ 248,000	82%	50%
			Total	29,229,000	\$ 346,951	\$ 737,633	\$ 511,424	113%	47%
Commercial	0.75	1	Main St Restaurant	1,387,000	\$ 14,388	\$ 30,063	\$ 23,531	109%	64%
	0.75	5	Main St Restaurant	518,000	\$ 5,868	\$ 8,352	\$ 8,013	42%	37%
	0.75	50th Percentile	Retail	54,000	\$ 1,381	\$ 1,521	\$ 1,521	10%	10%
	0.75	25th Percentile	Retail	4,000	\$ 898	\$ 1,067	\$ 1,067	19%	19%
Commercial	1	1	Main St Restaurant	1,921,000	\$ 20,077	\$ 38,461	\$ 33,799	92%	68%
	1	5	Prospector Restaurant	623,000	\$ 7,483	\$ 9,752	\$ 9,752	30%	30%
	1	50th Percentile	Office	83,000	\$ 2,261	\$ 2,535	\$ 1,927	12%	-15%
	1	25th Percentile	Office	24,000	\$ 1,690	\$ 1,968	\$ 1,249	16%	-26%
Commercial	1.5	1	Carwash	2,740,000	\$ 29,661	\$ 52,956	\$ 52,495	79%	77%
	1.5	5	Large Retail	1,383,000	\$ 16,448	\$ 23,342	\$ 23,342	42%	42%
	1.5	50th Percentile	Retail/Restaruant	271,000	\$ 5,735	\$ 6,218	\$ 4,108	8%	-28%
	1.5	25th Percentile	Retail	83,000	\$ 3,917	\$ 4,492	\$ 1,785	15%	-54%
Commercial	2	1	School	3,005,000	\$ 36,403	\$ 65,878	\$ 65,878	81%	81%
	2	5	Large Retail	1,690,000	\$ 22,838	\$ 39,209	\$ 39,209	72%	72%
	2	50th Percentile	Main St Restaurant	405,000	\$ 10,412	\$ 11,603	\$ 6,705	11%	-36%
	2	25th Percentile	Office/Healthcare	236,000	\$ 8,778	\$ 10,051	\$ 4,485	15%	-49%
Commercial	3	1	Hotel	10,335,000	\$ 120,756	\$ 223,250	\$ 187,826	85%	56%
	3	5	Hotel	2,748,000	\$ 43,476	\$ 53,854	\$ 53,237	24%	22%
	3	50th Percentile	Fitness	2,121,000	\$ 37,413	\$ 43,210	\$ 38,775	15%	4%
	3	25th Percentile	Office/Healthcare	709,000	\$ 23,759	\$ 26,723	\$ 11,274	12%	-53%
Commercial	4	1	Hotel	16,085,000	\$ 191,556	\$ 367,659	\$ 294,691	92%	54%
	4	5	Hotel	6,388,000	\$ 92,460	\$ 117,008	\$ 117,008	27%	27%
	4	50th Percentile	Restaurant/Ski Lodge	2,439,000	\$ 54,274	\$ 61,626	\$ 47,874	14%	-12%
	4	25th Percentile	Hotel	1,121,000	\$ 41,529	\$ 47,008	\$ 18,438	13%	-56%
Commercial	6	1	Hotel	12,906,000	\$ 182,650	\$ 222,448	\$ 222,448	22%	22%
	6	2	Hotel	8,490,000	\$ 139,947	\$ 162,643	\$ 153,234	16%	9%
	6	3	Hotel	5,412,000	\$ 110,183	\$ 126,556	\$ 104,174	15%	-5%



**Exhibit J**  
**Example Customer Impacts - Annual Water Usage and Bill Amount**

Customer Class	Meter Rate	User Rank	Description	Gallons of Water	Existing Water Bill	Proposed Water Bill	Optimized Bill	Percent Change	Percent Change if Meter Rate Optimized
Multi Family	0.75	1		322,000	\$ 3,009	\$ 3,209	\$ 3,209	7%	7%
	0.75	50th Percentile		67,000	\$ 1,405	\$ 1,333	\$ 1,333	-5%	-5%
	0.75	25th Percentile		41,000	\$ 1,193	\$ 1,126	\$ 1,126	-6%	-6%
Multi Family	1	1		831,000	\$ 14,034	\$ 18,981	\$ 15,640	35%	11%
	1	50th Percentile		112,000	\$ 2,371	\$ 2,186	\$ 1,774	-8%	-25%
	1	25th Percentile		66,000	\$ 2,053	\$ 1,956	\$ 1,460	-5%	-29%
Multi Family	1.5	1		2,128,000	\$ 43,162	\$ 53,355	\$ 52,911	24%	23%
	1.5	50th Percentile		202,000	\$ 4,761	\$ 4,438	\$ 2,798	-7%	-41%
	1.5	25th Percentile		105,000	\$ 3,970	\$ 3,823	\$ 1,869	-4%	-53%
Multi Family	2	1		2,202,000	\$ 34,724	\$ 44,597	\$ 40,866	28%	18%
	2	50th Percentile		488,000	\$ 11,598	\$ 12,564	\$ 11,107	8%	-4%
	2	25th Percentile		201,000	\$ 8,134	\$ 7,815	\$ 2,791	-4%	-66%
Multi Family	3	1		6,734,000	\$ 129,341	\$ 179,767	\$ 161,166	39%	25%
	3	50th Percentile		1,946,000	\$ 36,466	\$ 37,477	\$ 37,477	3%	3%
	3	25th Percentile		841,000	\$ 24,287	\$ 23,432	\$ 13,591	-4%	-44%
Multi Family	4	1		4,509,000	\$ 76,150	\$ 84,207	\$ 84,207	11%	11%
	4	50th Percentile		1,186,000	\$ 40,354	\$ 38,434	\$ 19,348	-5%	-52%
	4	25th Percentile		731,000	\$ 36,692	\$ 35,533	\$ 12,923	-3%	-65%
Multi Family	6	1		2,556,000	\$ 81,451	\$ 78,504	\$ 51,044	-4%	-37%
SFR		1		1,469,000	\$ 37,803	\$ 42,673		13%	
		5		723,000	\$ 16,136	\$ 18,604		15%	
		50th Percentile		46,000	\$ 1,008	\$ 995		-1%	
		25th Percentile		20,000	\$ 800	\$ 800		0%	
IRR	0.75	1		277,000	\$ 4,505	\$ 6,281	\$ 5,990	39%	33%
	0.75	5		113,000	\$ 2,064	\$ 2,699	\$ 2,699	31%	31%
	0.75	50th Percentile		61,000	\$ 1,452	\$ 1,717	\$ 1,717	18%	18%
	0.75	25th Percentile		8,000	\$ 828	\$ 1,047	\$ 1,047	26%	26%
IRR	1	1		663,000	\$ 11,704	\$ 15,916	\$ 15,916	36%	36%
	1	5		506,000	\$ 8,219	\$ 10,612	\$ 10,612	29%	29%
	1	50th Percentile		153,000	\$ 3,043	\$ 4,080	\$ 3,514	34%	15%
	1	25th Percentile		19,000	\$ 1,465	\$ 2,332	\$ 1,176	59%	-20%
IRR	1.5 and larger	1		2,643,000	\$ 45,710	\$ 60,201	\$ 60,201	32%	32%
	1.5 and larger	5		1,459,000	\$ 24,031	\$ 31,484	\$ 31,484	31%	31%
	1.5 and larger	50th Percentile		456,000	\$ 10,899	\$ 10,981	\$ 9,599	1%	-12%
	1.5 and larger	25th Percentile		206,000	\$ 5,077	\$ 7,717	\$ 4,540	52%	-11%



# Policy Questions

1. **Is the recommended cost-based water rate structure acceptable?**
  - a. Total revenue received from each customer class is proportional to their total water consumption
  - b. Higher cost burden placed on high water users
  - c. Fair and equitable
  - d. Cross class subsidies are avoided
  - e. Existing pumping surcharge distributes pumping cost based on service elevation
2. **Should initial recommended cost increases received by the highest water users be capped?**
  - a. Generally, the top 5 to 10 users in non-SFR meter rates will experience significant cost increases
  - b. Top Commercial users experience the highest increases due to lack of existing tiers and imbalance of revenue and water consumption
  - c. Some large water rate increases are mitigated if customers self-select into more optimal meter rates (see next policy question)
3. **Should customers be allowed to self-select into the optimal meter rate as recommended?**
  - a. **Creates potential of a significant drop in base rate revenue that would need to be corrected by future base rate adjustments to rebalance revenue from each meter rate proportional to its water use**
  - b. Provides the most cost-effective option for a customer's water needs
  - c. Maximizes the effect of tiered pricing and encourages conservation
  - d. Recommended frequency of changing meter rates would be limited to once every 3 years or possibly less frequent
4. **Should the new rate structure be delayed until after peak irrigation season, or a different implementation date?**

